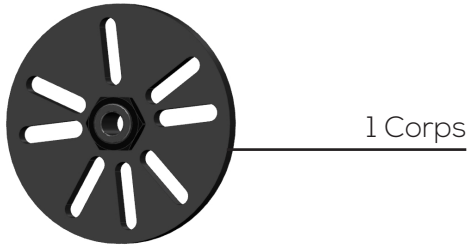


5180 Extracteur de Moyeux

Contenu



17 Adaptateurs male

4	M12 x 1,25
4	M12 x 1,50
4	M14 x 1,50
4	M16 x 1,50
1	M20 x 1,50

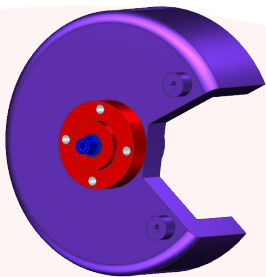


16 Adaptateurs female

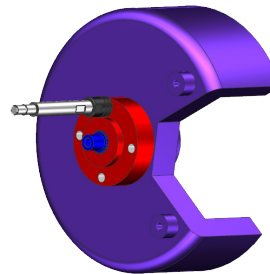
4	M12 x 1,25
4	M12 x 1,50
4	M14 x 1,50
4	M16 x 1,50



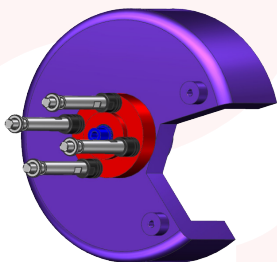
Instructions



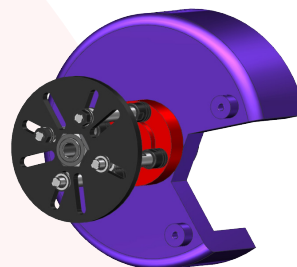
1- Retirer les rous, freins, disque.



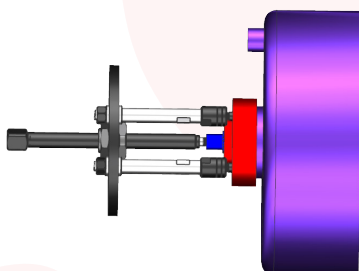
2- Choisir l'adaptateur correspondant au filetage.



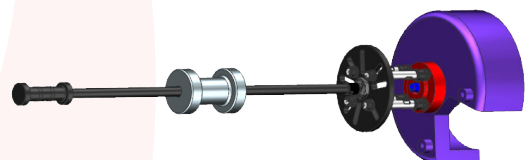
3 - Utilisez les rallonges nécessaires.
4 Vis 4 Rallonges
5 Vis 3 Rallonges
6 Vis 3 Rallonges



4- Placer le corps.



5- Placer la vis de pression comme pour pousser sur l'axe, (Roves carroll)



6- Monter la barre pour retirer le Moyeu. (Non inclus dans ce jeu)